

PUSH
Outside

PULL
Inside



SHS-P718

New Concept in Door Locks

PUSH PULL SERIES



Easy Way to Open Door

- Easy access using push-pull handle
- Biometric access system

Secured Lock-up

- Robust structural-design
- Anti-hacking encryption protocol

Smart Functions

- Automatic wake-up on approaching
- Locking notification on touch panel

Innovative Technology

- 14 patents pending
- Unprecedented design with modern style

Family Product



RF Card Type (SHS-P717)

Door Lock's

PUSH PULL

Push Pull's

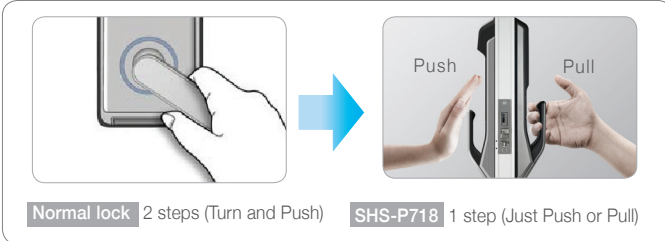
SAMSUNG



Easy way to open the door

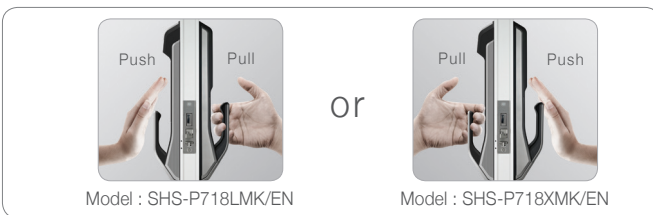
Just one step to open!

A new concept of push and pull design makes it convenient to use. Easy single-motion to open door. (Push a handle from the outside and pull it from the inside of the house.)



Available in both a push-pull or a pull-push

Depending on the direction of the door installed in the residence, customer can choose from either push-pull type or pull-push type on purchase.



Smart Functions



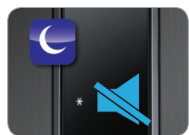
Automatic wake-up on approaching

IR sensor detects motion within 70 cm and wakes up the lock automatically



Locking notification on touch panel

It notifies the status of the door on touch panel ('Locked', 'Unlocked', etc.)



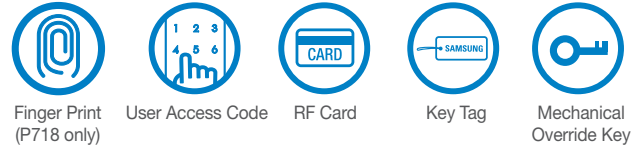
Manner Mode

It allows you to make a quiet entrance at late night. (Push * button and user access codes)



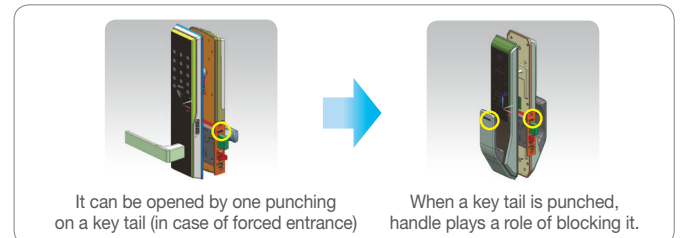
Secured Lock-up!

Various ways to open a door make for easy and safe entrance



Safe and robust design

Integrated structure of handle and main body that prevents from forced entrance



Technology and Design



14 patents pending (push-pull)

3 international patents

**Two-way latch mortise
Softer feel of door open**

Verified by self-test of 300,000 runs



Superior design that has won 3 major design awards

Samsung Smart Door Lock products won 3 major design awards (German IF, Red Dot Design Award and US IDEA Design Award).

· Specification

User access code	4~12 digit number combination , capacity : 10	
RF ID	ISO 14443A type(13.56MHz), capacity : 20	
Finger print (P718 only)	Method	Optical
	Verification time	Less than 1 second
	Capacity	100fingerprints(max.)
Size (WxHxD)	Outer body : 85x387x61mm(P718) 85x346.5x61mm(P717)	
	Inner body : 86x354.8x63mm	
Door thickness	38~80mm	
Power	DC 6V (AA Alkaline Batteries)X8	
Battery Life	Approximately 12 months (Average – 10 times per day)	

Network Specialist

SAMSUNG SDS

www.samsungsds.com
sales.smarthome@samsung.com

Copyright(c) 2013 SAMSUNG SNS CO.,LTD. All rights reserved.

2013.10