

USER MANUAL

[DIGITAL DOOR LOCK]



ES-F300D
ES-300D

PIN NUMBER
RFID CARD
FINGERPRINT(ES-F300D)
BLUETOOTH

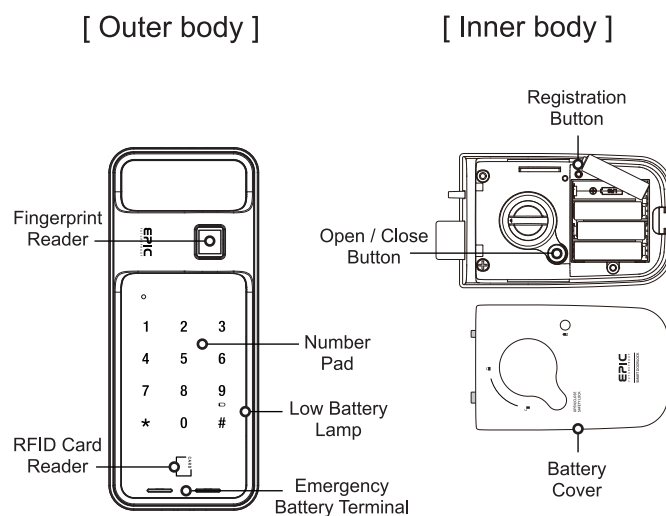
The default pin number is 1234.
Please change to new pin number.
Ensure not to use consecutive or repetitive numbers for your safety



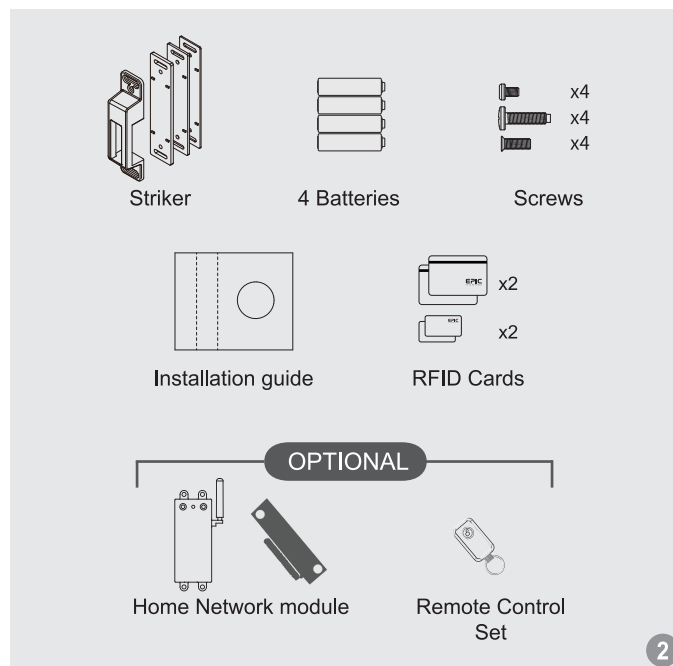
info@epic.co.kr www.epic.co.kr

This product should be installed by skilled installer only.
To receive full coverage of the product warranty,
Please do not install by yourself, For safety purposes.

Product Description



Product Components



Product Dimension

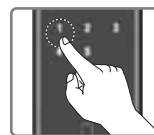
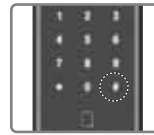
Description	Specification
Door Thickness	40~50mm
Fingerprint	Up to 100 Fingerprints can be registered
RFID Card	Up to 200 RFID cards can be registered
Power Use	DC 6V (4 LR6 1.5V AA Alkaline battery)
Emergency Power	DC 9V Alkaline battery (not included)
Fire detection temperature	60°C ± 10°C
Material	AI, ABS

Caution For ES-300D fingerprint feature is unavailable.
In all setting number [3] button will not be lighted

User Pin number registration

Caution Please perform while door is open. Default pin number is 1,2,3,4.
Don't forget your pin number. If you forgot your pin number,
New registration of pin number, RFID card and fingerprint is not possible

- Open battery cover, press [Registration] button and beep sound will be heard
- Enter pin number followed by [#] button
(1st Registration : Enter Initial pin number + [#] button)
- Check if the numbers [1, 2, 3, 4, 5] has been lighted on the number pad Press [1] button
- Enter 4~12 digits new pin number to be registered Press [#] button
- Re-Enter new pin number and press [Registration] button

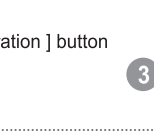
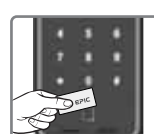


Note ◆ Only 1 user pin number can be saved

- ◆ When error occur during registration process, [2] button will be blinking along with an error sound
- ◆ During each process, when [Reg] button is pressed, the registration process will be end
- ◆ When the registration process has completed, a completion sound will be heard

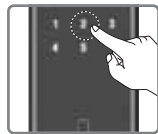
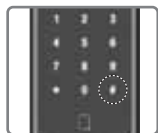
User RFID Card Registration (all-at-once)

- Open battery cover, press [Registration] button and beep sound will be heard
- Enter the pin number followed by [#] button
- Check if the numbers [1, 2, 3, 4, 5] has been lighted on the number pad Press [2] button
- Place the card to be registered on the card reader. When the card has been successfully registered, The designated 3 digit card number location will be displayed on the number pad
- The numeric LED lights up once in the order of [2] [1,3] [4,6] [7,9] [8] it is now on additional card registration status. If you want to add more cards, repeat steps ④ ~ ⑤. If you no longer have a card to register, press the [Registration] button



User RFID Card Registration (one-by-one)

- Open battery cover, press [Registration] button and beep sound will be heard
- Enter the pin number followed by [#] button
- Check if the numbers [1, 2, 3, 4, 5] has been lighted on the number pad Press [2] button
- First select card location number from 001~200 enter on the number pad, press [#] button. When selected number is already in use, error sound will be heard and LED [7] will be lighted on the screen
- Place the card to be registered on the card reader. When the card has been successfully registered, The designated 3 digit card number location will be displayed on the number pad
- The numbers [2] [1,3] [4,6] [7,9] [8] will be lighted in sequence repeatedly, it is in RFID card entry standby status. Place the card to be registered on the card reader. The beep sound will be heard and the saved 3 digit location number will be displayed on the number pad. To register additional card, repeat steps ④ ~ ⑤. When all cards are registered press [Registration] button to complete

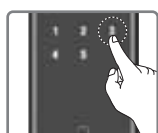
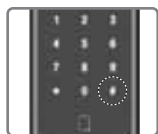


Note

- ◆ Up to 200 cards can be registered
- ◆ New registration will not delete previously registered card in the system
- ◆ When error occur during registration LED [2] will be lighted

User Fingerprint Registration (all-at-once) EF-F300D

- Open battery cover, press [Registration] button and beep sound will be heard
- Enter the pin number followed by [#] button
- Check if the numbers [1, 2, 3, 4, 5] has been lighted on the number pad Press [3] button
- The total number of registered fingerprint is displayed in numbers, then all the LED will turn on and the fingerprint registration is on standby status
- Enter the fingerprints to be registered sequentially for 4 times. If fingerprints are not registered successfully LED [2] will be blinking and an error sound will be heard. Register fingerprint again at this time
- When fingerprint is registered successfully for 4 times Complete sound will be heard and it will be in stand-by mode. To register additional fingerprint repeat steps ⑤ ~ ⑥. To complete registration. Press [Registration] button

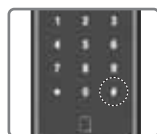


Note ◆ ES-F300D version only

- ◆ Up to 100 fingerprints can be registered
- ◆ You can also re-register registered fingerprints
- ◆ When error occur during registration LED [2] will be blinking

User Fingerprint Registration (one-by-one)

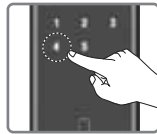
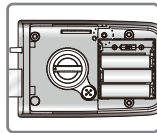
- Open battery cover, press [Registration] button and beep sound will be heard
- Enter the pin number followed by [#] button
- Check if the numbers [1, 2, 3, 4, 5] has been lighted on the number pad Press [3] button
- The total number of registered fingerprint is displayed in numbers, then all the LED will turn on and the fingerprint registration is on standby status
- First enter fingerprint number from 001~100 enter on the number pad, press [#] button. When selected number is already in use, error sound will be heard and LED [7] will be lighted on the screen
- Place finger on sensor for 4 times consecutively following number instruction. If the fingerprint is not registered LED [2] will be blinking, please reregister fingerprint again. When the fingerprint is registered 4 times successfully, the completion sound will be heard. Then it is in stand-by mode for additional fingerprint registration. To register additional fingerprint, repeat steps ⑤ ~ ⑥. To end the registration process, press [Registration] button



Note ◆ ES-F300D version only

User Guest Pin Number Registration (1-time usage)

- Open battery cover, press [Registration] button and beep sound will be heard
- Enter the pin number followed by [#] button
- Check if the numbers [1, 2, 3, 4, 5] has been lighted on the number pad Press [4] button
- When LED is all lighted, enter the guest pin number to be registered. Enter 4~12 digits number and press [#] button
- Enter the guest pin number again Press [Registration] button and the registration of guest pin number is complete



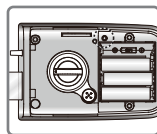
Note

- ◆ If you register a new guest pin number, the old one will be deleted
- ◆ Only 1 guest pin number can be saved. It will be deleted after 1 usage

User Remote Control Registration (all-at-once)

* If the remote control receiver module is not connected and number [5] button does not light up, the remote control cannot be registered

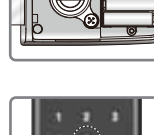
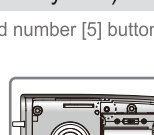
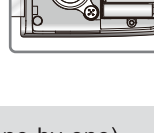
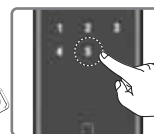
- Open battery cover, press [Registration] button and beep sound will be heard
- Enter the pin number followed by [#] button



User Remote Control Registration (one-by-one)

* If the remote control receiver module is not connected, and number [5] button does not light up, the remote control cannot be registered

- Open battery cover, press [Registration] button and beep sound will be heard
- Enter the pin number followed by [#] button
- Check if the numbers [1, 2, 3, 4, 5] has been lighted on the number pad. press [5] button and all LED will be lighted, It is now on stand-by mode for Remote Control Registration
- When the LED is all lighted enter the Remote control number on the number pad followed by [#] button. You can select from 001~010 Remote Control numbers. And the numbers [1, 2, 3, 5, 8, 0] will be lighted on the number pad. It is now on stand-by mode for Remote Control Registration
- While on stand-by mode for new remote control registration press [Open] button of remote control to be registered
- When the remote control is successfully registered The remote control number will be displayed on the number pad. For registration of additional remote control repeat steps ④ ~ ⑥
- When all remote controls are registered, press [Registration] button to complete registration process

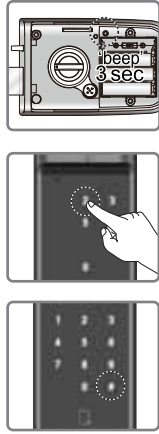


Note

- ◆ The remote control module should be installed on the unit to work
- ◆ Up to 10 remote controls can be registered
- ◆ New registration will not delete stored ones in the unit
- ◆ When an error occur during registration LED [2] will be blinking and an error sound will be heard

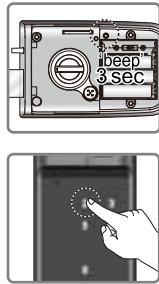
User RFID Card Deletion (All-at-once)

- ① Open battery cover, press [Registration] button for 3 seconds
Number pad will turn on
- ② Enter the user pin number followed by [#] button
User deletion mode on
- ③ Check if numbers [2, 3, 5, 0] are lighted
Press [2] button and the number pad will light up
- ④ When the number pad turns on press [#] button for 5 seconds, the melody will be heard and all cards will be deleted



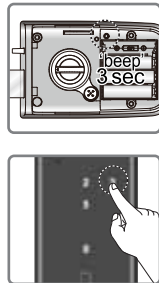
User RFID Card Deletion (one-by-one)

- ① Open battery cover, press [Registration] button for 3 seconds
Number pad will turn on
- ② Enter the user pin number followed by [#] button
User deletion mode on
- ③ Check if numbers [2, 3, 5, 0] are lighted
Press [2] button and the number pad will light up
- ④ Please enter 3 digit card number(001~200) to be deleted
Press [#] button and the card will be deleted.
To delete additional card, repeat step ④
Press [Registration] button to finish the process



User Fingerprint Deletion (All-at-once)

- ① Open battery cover, press [Registration] button for 3 seconds
Number pad will turn on
- ② Enter the user pin number followed by [#] button
User deletion mode on
- ③ Check if numbers [2, 3, 5, 0] are lighted
Press number [3]
- ④ When the number pad turns on press [#] button for 5 seconds, the melody will be heard and all fingerprints will be deleted



Note ◆ ES-F300D version only

7

User Fingerprint Deletion (one-by-one)

- ① Open battery cover, press [Registration] button for 3 seconds
Number pad will turn on
- ② Enter the user pin number followed by [#] button
User deletion mode on
- ③ Check if numbers [2, 3, 5, 0] are lighted
Press number [3]
- ④ Enter the fingerprint number to be deleted
You can select from 001~100 then press [#] button
and the fingerprint will be deleted
For additional fingerprint deletion, repeat step ④
- ⑤ To end the deletion process, press [Registration] button

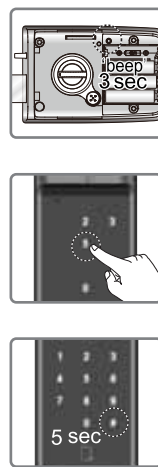


Note ◆ ES-F300D version only

User Remote Control Deletion (All-at-once)

※ If the remote control receiver module is not connected, and number [5] button does not light up, the remote control cannot be registered

- ① Open battery cover, press registration button for 3 seconds
Number pad will light up
- ② Enter the user pin number followed by [#] button
User deletion mode on
- ③ Check if numbers [2, 3, 5, 0] are lighted
Press number [5]
- ④ Check if the number pad is lighted then press [#] for 5 seconds, when the melody is heard, all remote control registered in the unit has been successfully deleted

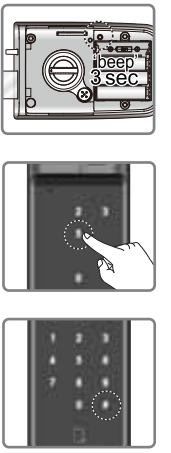


8

User Remote Control Deletion (one-by-one)

※ If the remote control receiver module is not connected, and number [5] button does not light up, the remote control cannot be registered

- ① Open battery cover, press [registration] button for 3 seconds
Number pad will light up
- ② Enter the user pin number followed by [#] button
User deletion mode on
- ③ Check if numbers [2, 3, 5, 0] are lighted
Press number [5]
- ④ Enter the remote control number to be deleted, You can select from 001~010 then press [#] button and the specific remote control will be deleted
For additional remote control deletion, repeat step ④
To end the registration process, press [Registration] button



Dual-mode security authentication ON / OFF

- ① After entering the user pin, press the LED [#] button twice,
Basic Features setting ON
- ② Press LED [2] button, or press LED [5] button followed by [Registration] button and setting is complete



Note

- ◆ LED [2] : Dual-mode security authentication ON
- ◆ LED [5] : Dual-mode security authentication OFF
- ◆ The remote control, guest pin number, Bluetooth can open the deadbolt lock without secondary authentication
- ◆ When the secondary authentication(card or fingerprint) of the user is not registered(or all of them are deleted), the deadbolt lock is released only by the user's primary authentication(pin number)
- ◆ If the user's secondary authentication is not registered, dual-mode security authentication can not be turned on and the LED [2] button flashes with an error tone
- ◆ Double security authentication is ON and the secondary authentication of the registered user If you delete all, dual-mode security authentication will be OFF

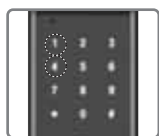
9

Random Number Feature

- ◆ Up to 20 digits can be entered including the pin number
- ◆ The Pin number must be entered after the random number

Automatic Card Recognition / Manual Recognition

- ① Enter the user pin number, press [#] once basic feature setting ON
- ② Press [1] button or [4] button
Press [Registration] button and setting is complete

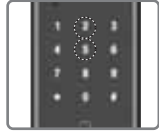


Note ◆ [1] : Automatic Mode ◆ [4] : Manual Mode
◆ In Automatic mode - Place the RFID Card on the card reader and the door will open
◆ In Manual mode - Touch the number pad, Place the RFID Card on the card reader and the door will open

Deadbolt auto lock / manual lock

※ An optional feature that lets you set the lock in automatic and manual lock mode

- ① Enter the user pin number, press [#] once basic function setting ON
- ② Press LED [2] button or LED [5] button
Press [Registration] button setting is complete

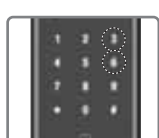


Note ◆ LED [2] : Automatic Mode ◆ LED [5] : Manual Mode

- ◆ When deadbolt auto lock is set, the operation is executed automatically according to the state of the sensor
- ◆ When deadbolt is set to manual, Touch the Number Pad to execute the lock action

Sound Setting (Buzzer, Notification, Volume)

- ① After entering user pin number, press LED [#] button once to enter basic function setting mode
- ② Press the LED [3] button or the LED [6] button
- ③ Press the [Registration] button to complete the setting and exit the setting mode

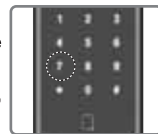


Note ◆ LED [3] : increase volume ◆ LED [6] : decrease volume
◆ Controls all volume except [Alarm Volume] and [Door Opening Melody Volume]
◆ Volume can be set to 8 levels (1 level : silent ~ 8 level : 80dB)

10

Door Opening Notification ON / OFF

- ① After entering user pin number, press [#] button once to enter basic function setting mode
- ② Press LED [7] button followed by [Registration] button to complete the setting and exit the setting mode



Note

- ◆ ON and OFF setting is set by pressing alternately
- ◆ When ON is set, [deadbolt auto lock setting] is in progress and the latched has reacted at least once, When the deadbolt is open, the buzzer will be heard for 3 times every 7 seconds

1 minute lock warning function

- ◆ 5 consecutive failed pin number, card, and fingerprint entry, will result to 1minute suspension of authentication
- ◆ After the alarm sounds for 7 seconds, operation stops for 1 minute
- ◆ During 1 minute lock operation, an error sound occurs when authentication is attempted
- ◆ During 1 minute lock operation, Pin number, Card, Fingerprint and Remote control operation will not work
- ◆ Pressing [Open / Close] button will cancel the alarm

Etiquette setting

- ① Press [#] button

Note

- ◆ Only the one time, pin, card, fingerprint, remote control and bluetooth authentication will be silent regardless of [buzzer & alert & notification volume setting]
- ◆ In the case of pin authentication, there is a maximum of 5 correct re-entry chance
- ◆ However, a warning sound will occur after 5 successive authentication failures

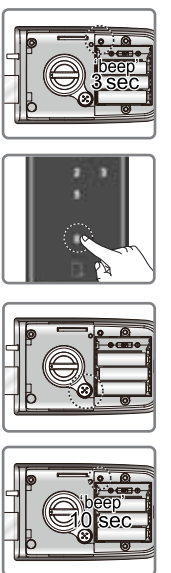
Low battery warning function

- ◆ When low battery is detected, the [Battery Replacement] LED lights up
- ◆ When low battery is detected, a notification melody will be heard
- ◆ Low voltage : 4.5V
- ◆ When the voltage returns to 5.5V, the alarm is released

11

User Registration Reset

- ① Open battery cover, press registration button for 3 seconds
Number pad will light up
- ② Enter user pin number followed by [#] button
User deletion mode on
- ③ Check if numbers [2, 3, 5, 0] are lighted
Press [0] button and the number pad will light off
- ④ Press [Open / Close] button inside
- ⑤ Press [Registration] button for 10 seconds and all registered information will be deleted in the unit



Note

- ◆ Even if the registration reset is performed the initial administrator pin number will remain
- ◆ Only registered information will be deleted. (Settings will remain)
- ◆ Pressing [Reg] button while performing each ③ ~ ④ steps will end the process

Self-diagnosis

- ◆ LED [2] : Registration & Deletion error (pin, card, fingerprint, remote control, dual-mode security authentication ON Setting failed)
- ◆ LED [3] : Registration error (pin, card, fingerprint, number of remote control registration "Full" or no registered fingerprint)
- ◆ LED [4] : Deadbolt operation error
- ◆ LED [5] : Intrusion alarm
- ◆ LED [6] : Authentication error (unregistered pin, card, fingerprint)
- ◆ LED [7] : In the registration mode, the placement numbers already registered (card, fingerprint, remote control)
- ◆ LED [8] : High temperature alarm
- ◆ LED [9] : Internal / External Force Lock Setting
- ◆ LED [0] : Fingerprint module error

12